



KERRY DEAF RESOURCE CENTRE

KDRC provides services to Deaf and hard of hearing people at county level and contributes to national issues of equality, access and rights.

Charity No: **CHY20854**

4 Gas Terrace
Tralee
Co. Kerry

03.04.17

SUSAN O CALLAGHAN (KDRC BOARD MEMBER) ON MATERNITY LEAVE.

We would like to extend our sincere best wishes to one of our Board members, Susan O'Callaghan who is going on maternity leave shortly until mid-November.

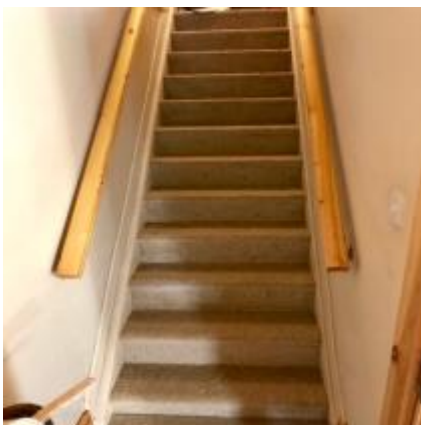
In addition to being a great support to KDRC's Board & Manager, Susan also works with Cork Deaf Association as a Resource Officer.

We, at KDRC would like to wish Susan all the best with her maternity leave and the future birth of her baby.

Susan will be missed here in KDRC. However, we will eagerly await her return in November. We would also like to wish Susan a very Happy Birthday.



THANK YOU KDRC STAFF MEMBER FOR SECURING DONATION OF CARPET FOR OFFICE.



We would like to extend our sincere gratitude to one of our staff members Therese Gallant for her work on securing a donation of carpet for the stairs in our office.

Over the summer, we were planning on painting our office space & changing the carpet on our stairs. We were in the process of saving up for the renovations. In the meantime, Therese came up with a few creative sponsorship ideas. Within 24 hours, not only did she find a company to sponsor the carpet, it was also fitted. The only cost to our service

was the fee to lay the carpet. On behalf of KDRC, we would like to thank Therese sincerely for her hard work which has improved the look of our office & saved us money too.

REGISTRATION OF IRISH SIGN LANGUAGE (ISL) TUTORS FOR HOME TUITION SCHEME.

The Department of Education provides an allowance to parents of deaf children to enable them obtain 1 hour a week of sign language tuition for their deaf child during school time and up to 7.5 hours of tuition during the summer months.

The Irish Deaf Society (IDS) are now calling on all ISL Home Tuition Tutors to register with the IDS.



On a recent mailshot, the IDS say “In reference to the Irish Sign Language (ISL) scheme provided and funded by the Department of Education, the home tuition services whereby ISL tutors visit the home of Deaf and hard of hearing pre-school children and school-going pupils to provide language teaching and learning of ISL for the child, their families and parents/ guardians.

All teachers/ tutors must complete & abide by the full application process, including the issue of an approved letter confirming that the tuition has been sanctioned and the date of commencement of the tuition.

All tutors must comply with the Vetting requirement beforehand as from 29th April it is against the law for people to start work with children or vulnerable adults until they have been vetted.

Qualified ISL teachers can apply for registration through the Teaching Council and be vetted through that organisation.

ISL tutors who are proficient in ISL or hold a QQI (Quality and Qualifications Ireland) certificate must affiliate to the Irish Deaf Society who can then apply for vetting on their behalf.

Requirements for Teachers/ Tutors:

- 1. Regular membership of the ISL Academy.**
- 2. Attend our Continuous Professional Development workshops for the scheme.**
- 3. Tutors must meet us so we can verify their identity.**
- 4. Vetting must be updated every two years.**

In co-operation with the Archdiocese of Dublin Child Safeguarding and Protection Services, the Irish Deaf Society will facilitate the vetting of ISL teachers/ tutors, liaising with the National Vetting Bureau (NVB) to process the Vetting Application Form on the receipt of the relevant documentation from teachers/ tutors, thereby allowing the Department to provide funding for ISL tuition to parents/ guardians”.

For more information on the registration scheme, please contact Tracey Treanor at the Irish Deaf Society by email at: Tracey@irishdeafsociety.ie

The Irish Deaf Society also has a range of information for parents at <https://www.irishdeafsociety.ie/information-for-parents/>