

# Deaf Awareness Training

## Qualification aim

Signature Level 1 Award in Deaf Awareness and Communication is designed to provide introductory knowledge and skills for enhancing communication with deaf/deafblind people.

## Qualification structure

To achieve the full Level 1 Award in Deaf Awareness and Communication, learners are required to achieve two units. Whilst Unit K101 is a theory unit, Unit T101 is a practical unit. For successful achievement in both units you will be proffered a certificate of attendance. However, should you require to obtain an award from Signature, there is an extra charge involved.

## Target group

Level 1 Award in Deaf Awareness and Communication is suitable for those who (1) want to acquire knowledge about deafness and deafblindness and how they affect communication and (2) want to acquire essential skills to facilitate effective communication with deaf/deafblind people.

## Unit K101 – Deaf and Deafblind Awareness

This unit is designed to give learners introductory-level knowledge and understanding about deafness and deafblindness and how communication is affected. It describes what it means to be deaf\* and what support services are available to improve awareness and communication between deaf and hearing people.

## Unit T101 – Communication Tactics with Deaf and Deafblind People

This unit is designed to be deliverable in a one-day training session. It aims to equip learners with important skills for effective communication with deaf/deafblind\* people. It is ideal for 'frontline' workers particularly in public/private institutions and others who would like etc, who may meet or work with a deaf or deafblind person, would like to acquire knowledge and skill necessary to develop communication methods.

\*In this unit the term 'deaf' relates to all of the following: deaf, deafened, deafblind, hard of hearing, Deaf ISL users, Deaf-visually impaired, blind-hearing impaired and people with congenital deafblindness.

As part of the course it is strongly advisable for practical purposes that learners are encouraged to meet and converse with a deaf or deafblind person.

# Irish Sign Language Courses

## At our premises

We organise Irish Sign Language classes at our premises throughout the year. We also provide mobile training for companies and organisations at their premises. To find out more or to enrol, please contact us or book online at [www.irishdeaf.com](http://www.irishdeaf.com) to reserve a place.

## Basic ISL Course

This is a short course running for 8 weeks. It is ideal for those who are interested in learning basic ISL to communicate better with deaf/deafblind people. This course has 1 assessment; however, this is optional.

## Level 1 ISL Course

This is a full-year course which runs for 24 weeks. There are three assessments which form part of this course; however, these assessments are optional.

A Certificate will be awarded on passing all assessments. You may continue onto Level 2 ISL after passing Level 1 successfully.

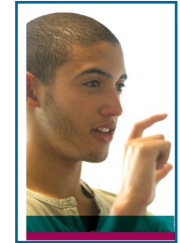
## Level 2 ISL Course

This is a full-year course which runs for 24 weeks. There are three assessments which form part of this course; however, these assessments are optional.

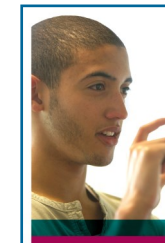
A Certificate will be awarded on passing all assessments. You may continue onto Level 3 ISL after passing Level 2 ISL successfully. Those who would like to do Level 2 ISL but have not done Level 1 ISL may be able to bypass Level 1 ISL if the tutor feels they may be capable of fluent ISL.

## Level 3 ISL Course

We are currently working towards developing Level 3 ISL courses depending on demand. Those interested in doing Level 3 ISL who have not done Level 1 or 2 ISL with Signature will be asked to complete all assessments successfully.



If interested,  
get in touch!



Irish Deaf.com is pleased to announce that we are running a new course in Deaf/Deafblind Awareness

Irish Deaf.com also runs regular Irish sign language courses all year round

# Want to know more?

check out our website or email us

# Deaf/Deafblind Awareness Training & Irish Sign Language



SUPPORTING THE DEAF COMMUNITY



SUPPORTING THE DEAF COMMUNITY

Deaf Village Ireland,  
Ratoath Road,  
Cabra,  
Dublin 7,  
Ireland

Email: [info@irishdeaf.com](mailto:info@irishdeaf.com)

Web: [www.irishdeaf.com](http://www.irishdeaf.com)

